



POSITION NAME

LINE HEAD
ENGINEERING

EDUCATION

BTech, BE - Mechanical

BUSINESS

PULP & FIBRE

LOCATION

Nagda - Madhya Pradesh

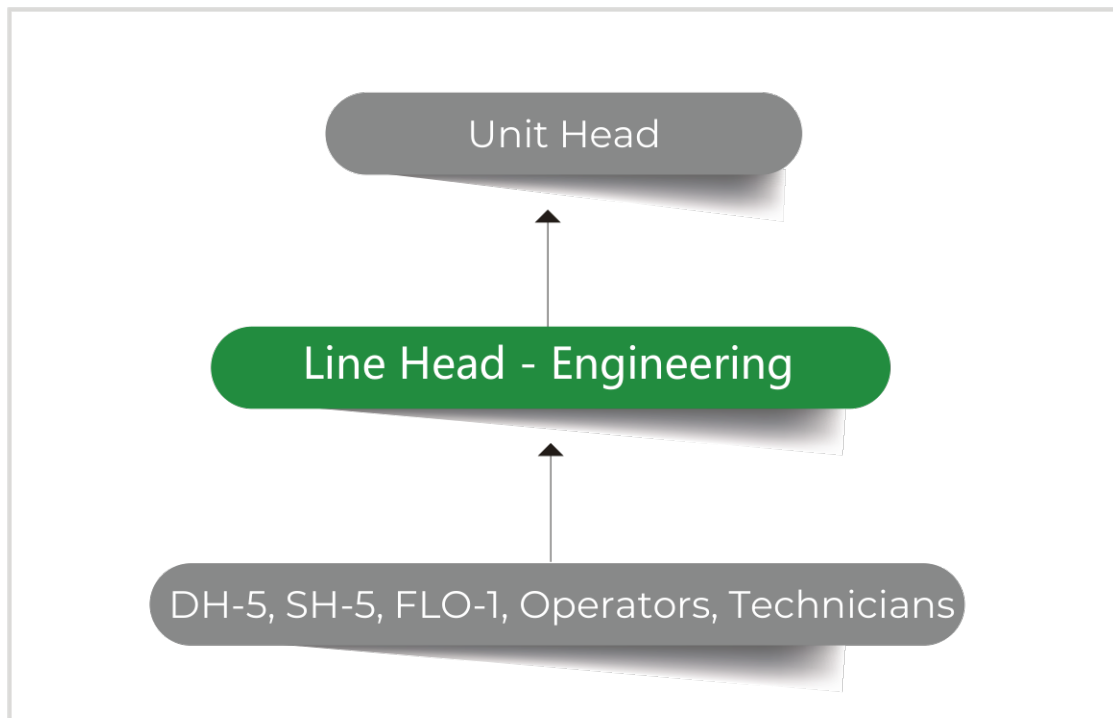
KEY RESPONSIBILITIES

- Mechanical Maintenance Plan, direct & monitor various Mechanical Maintenance activities of the Plant so as to ensure the availability of equipment at all time without downtime / breakdown
- Electrical Maintenance Plan, direct & monitor various Electrical Maintenance activities of the Plant so as to ensure the availability of Electrical equipment at all time
- Instrumentation Maintenance Plan, direct & monitor various Instrumentation Maintenance activities of the Plant so as to ensure the availability of instrumentation system at all time without downtime /breakdown
- Safety & Environment - Lead Process Safety Management (PSM) program implementation improvements
- Capex/ Plant Upgrade Planning & Implementation To monitoring, coordinate and ensure implementation of Capex schemes (Planning & Budgeting) of the Plant so as to ensure the timely upgradation of plant. Cost Monitor to ensure efficient utilization of inputs / resources to optimize expenditure and control cost of maintenance.
- People Management - Identify and facilitate appropriate training of competency gaps with the help of HR department
- Regulatory compliance - Ensure all the relevant regulatory compliances applicable to the operations are adhered to
- Civil Maintenance- To plan, design, direct & monitor Civil, infrastructure development, plant protection, structural & equipment painting, and overall contract related civil activities in and around factory to achieve related organisational and business objective availability

ADDITIONAL REQUIREMENTS

- 12 - 15 years of experience.

REPORTING STRUCTURE



UNIT LOCATION BRIEF

- 155 KTPA, Commissioned in 1954.
- Largest producer of spun dyed fibre.
- Main Products are Viscose, Modal and Micro Modal.
- Nearest City/airport Indore -near Bhopal.
- School available till Class 12.
- Higher education in Indore/Bhopal.