



BUSINESS
CEMENT

LOCATION
Rajasthan, Maharashtra

POSITION NAME
FUNCTION HEAD
TECHNICAL

EDUCATION
BE/BTech - Chemical / Mechanical

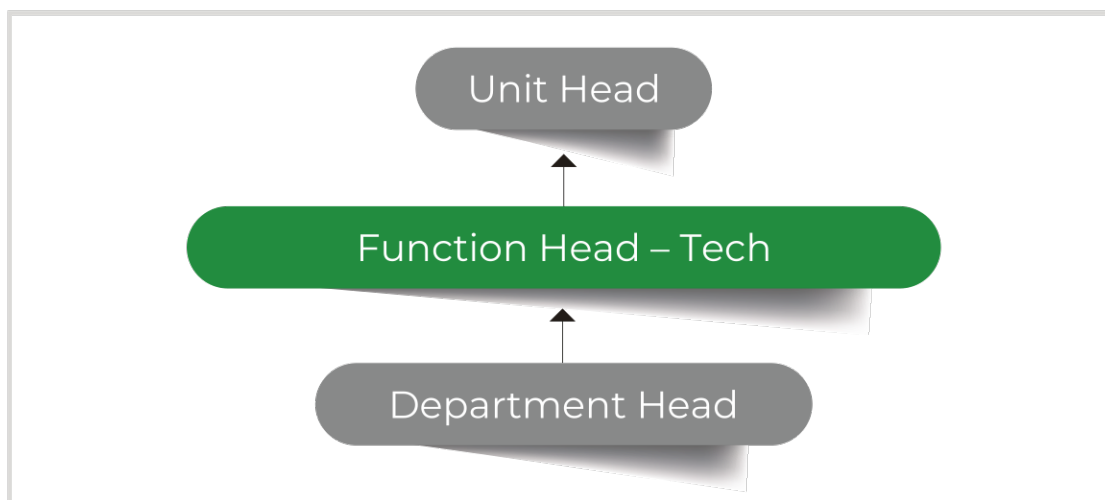
KEY RESPONSIBILITIES

- Ensure productivity enhancement, growth and sustainability of the unit
- Oversee efficient Plant and TPP operation and maintenance for plant operations and reliability
- Identify and monitor continuous improvement projects in Plant ,TPP, desalination to enhance capacity, improve productivity, improve quality
- Monitor safe & accident free working conditions and compliance of proper safety measures, Pollution Control norms.
- Establish procedure and systems to ensure legal compliances of all statutory obligations.
- Plan & monitor the plant and TPP operation and maintenance activities to produce desired cement quality at optimum cost
- Oversee implementation of people development initiatives and its progress.

ADDITIONAL REQUIREMENTS

- 15 - 18 years of experience.

REPORTING STRUCTURE



UNIT LOCATION BRIEF

- **Vikram Cement Works (VCW)** started with a single manufacturing line of 0.5 MTPA in the year 1985.
- Later, Line-2 with similar capacity 0.5 MTPA was established in the year 1986.
- Subsequently, in the year 1991, Line-3 with 1.0 MTPA was established along with up-gradation of other two Lines to 0.75 MTPA each, thus attaining a total capacity of 2.5 MTPA.
- The journey of excellence with technological up gradation such as retrofitting of coolers, continual improvements & optimization projects resulted in three units (Line-I, II & III) with ultimate capacity of 4.0 MTPA cement production.
- The unit is producing Clinker and Gray Cement.
- Has a housing colony and school with CBSE board.
- **Awarpur Cement Works** is an integrated plant with clinker production capacity of 3.3 MTPA (9,550 TPD) and cement production capacity of 4.48 MTPA. ACW commissioned in 1983 by L&T Group was acquired by Aditya Birla Group in 2004.
- A grinding unit of ACW - Nagpur Grinding Unit - is under project execution stage along with production capacity expansion of clinker from 3.3 MTPA to 4.5 MTPA (with Line-I of 0.3 MTPA and Line-II of 0.9 MTPA) and cement from 4.48 MTPA to 6.0 MTPA is in progress.
- Has a housing colony and school with CBSE board.