



**BUSINESS**  
**CEMENT**

**LOCATION**  
**Rajasthan, AP, Chhatisgarh**

**POSITION NAME**

**FUNCTION HEAD**  
**MINES**

**EDUCATION**

BE - Mining  
Certified 1st Class Mining Manager by DGMS

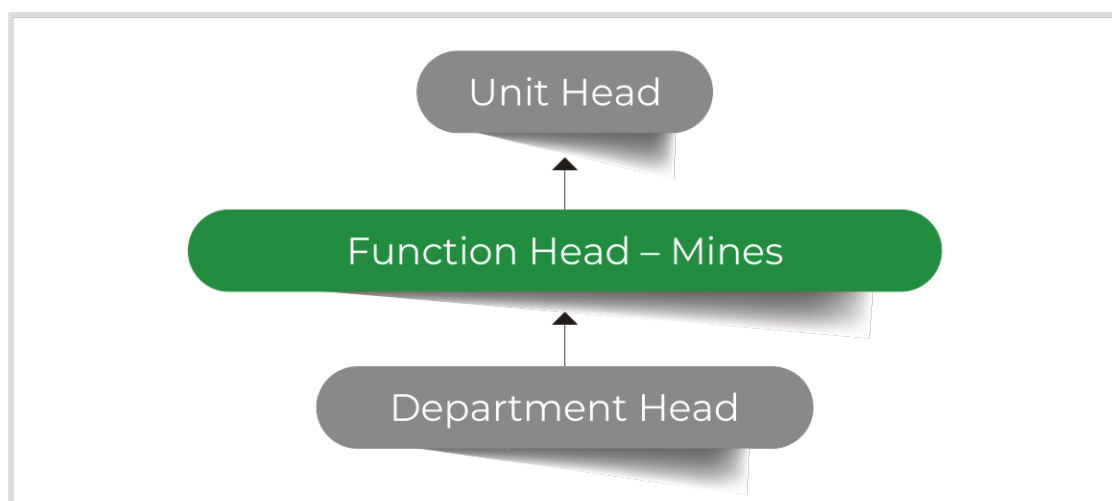
### KEY RESPONSIBILITIES

- To develop long term strategy on Mines' life and land acquisition for Limestone, Clay, and Laterite mines to ensure sustainability of mining operations at the unit
- Organize smooth supply of Limestone, Clay & Laterite with desired quantity and optimum quality
- Monitor mining cost to ensure achievement of business goals.
- Drive new ideas and improvement plans to reduce cost.
- Enable improvement in stakeholder morale through constructive dialogue

### ADDITIONAL REQUIREMENTS

- 15 - 18 years of experience.

### REPORTING STRUCTURE



## UNIT LOCATION BRIEF

- **Aditya Cement Works** has cement manufacturing capacity of 8 MTPA (Line-I: 2.75 MTPA and Line-II: 5.25 MTPA) and clinker capacity is 15,500 TPD (Line-I: 5,500 TPD and Line-II: 10,000 TPD).
- Aditya Cement Works Line-I was commissioned in 1995 and Line-II in 2008.
- It also inaugurated its Line-III project on 27 June 2013. The Line-III will add 2 MTPA (6,000 TPD) to its capacity, and will be commissioned by year 2015. The new unit is expected to increase the plant capacity to 21,000 TPD.
- Aditya Cement Works Mine has a lease area of 760.69 hectares with limestone reserves of 255.37 MT. The mine pit stores 23.81 lakh kilo liters of rain water.
- Has a housing colony and school (CBSE board) for employees. Nearest Airport - Udaipur (1 hour from the plant). Higher education in Udaipur/Jaipur.
- **Andhra Pradesh Cement Works** was a subsidiary of Grasim Industries Limited acquired by Aditya Birla Group from L&T Group in 2004.
- It is located on the picturesque hilly area near Tadipatri, on the border line between Anantapur and Kurnool Districts in Rayalseema.
- The installed capacity of 2 MTPA commissioned in 1998, enhanced to 2.7 MTPA over a period of six years through several improvements and modifications.
- The plant went through further expansion in 2008 by putting up a second Line with another 3.4 MTPA. Currently, the total cement production capacity of APCW, along with the associated Units, is 11 MTPA.
- Has a housing colony and school (CBSE board) for employees.
- **Hirmi Cement Works** has 2.75 MTPA (8200 TPD) cement production capacity.
- Production capacity of HCW was gradually enhanced through in-house modifications from 5,500 TPD to 8,200 TPD. It was established in the year 1994 by L&T Group and Aditya Birla Group acquired it in 2004.
- Has a housing colony and school (CBSE board) for employees.
- **Nathdwara Cement Works** has 2-lines with a capacity to manufacture 6.25 MTPA of cement, 4.6 MTPA at the Integrated Unit & 1.4 MTPA at the 'Neem Ka Thana' Grinding Unit.
- The unit also has a Captive Power Plant with total capacity of 65 MW. The company has two limestone mines at Amla and Thandiberi at a distance of 2 Kms and 7 kms respectively (from the plant) with capacity of 635 MTPA and 1065 MTPA.
- Has a housing colony and school (CBSE board) for employees.