



BUSINESS

CEMENT

LOCATION

**Rajasthan, Karnataka, Guj,
Chhatisgarh, MP**

POSITION NAME

DEPARTMENT HEAD

MECHANICAL

EDUCATION

BE/BTech - Mechanical

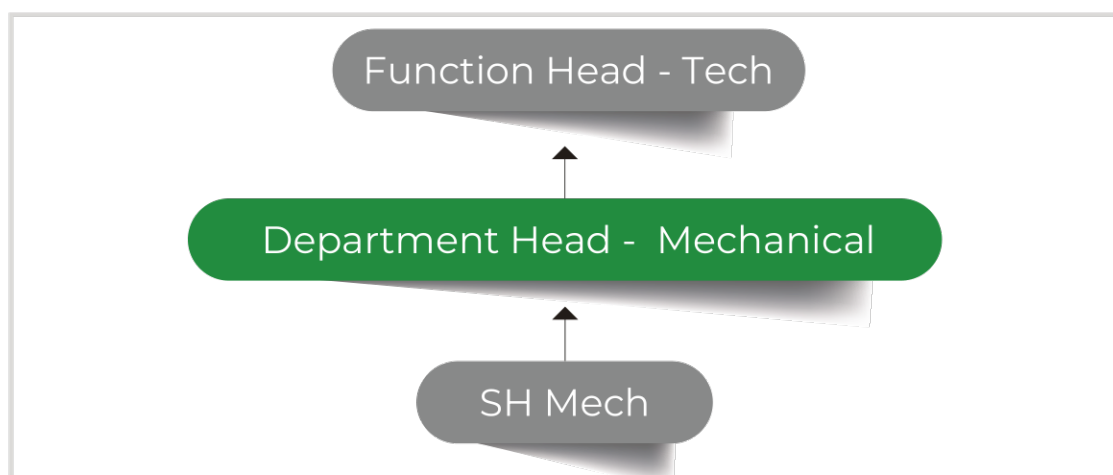
KEY RESPONSIBILITIES

- Ensure continuous operation & availability plant to achieve the budgeted production with utmost safety, optimum cost and power.
- Ensure qualitative and safe breakdown and shutdown maintenance.
- Execute modifications and CAPEX jobs relevant to department
- Coordinate, organize & monitor effective implementation of IMS and other systems in the department for improvement of productivity and creating safe work culture
- To build & sustain a conducive work culture within department to improve productivity

ADDITIONAL REQUIREMENTS

- 10 - 12 years of experience.

REPORTING STRUCTURE



UNIT LOCATION BRIEF

- **Aditya Cement Works** has cement manufacturing capacity of 8 MTPA (Line-I: 2.75 MTPA and Line-II: 5.25 MTPA) and clinker capacity is 15,500 TPD (Line-I: 5,500 TPD and Line-II: 10,000 TPD).
- Aditya Cement Works Line-I was commissioned in 1995 and Line-II in 2008.
- It also inaugurated its Line-III project on 27 June 2013. The Line-III will add 2 MTPA (6,000 TPD) to its capacity, and will be commissioned by year 2015. The new unit is expected to increase the plant capacity to 21,000 TPD.
- Aditya Cement Works Mine has a lease area of 760.69 hectares with limestone reserves of 255.37 MT. The mine pit stores 23.81 lakh kilo liters of rain water.
- Has a housing colony and school (CBSE board) for employees. Nearest Airport - Udaipur (1 hour from the plant). Higher education in Udaipur/Jaipur.
- **Rajashree Cement Works (RCW)** is one of the largest cement manufacturing units in Karnataka with a clinker production capacity of 12,500 tons per day (TPD).
- Rajashree currently comprises three manufacturing lines. Line I was commissioned in 1984 with a capacity of 1500 TPD. As the industry witnessed an increase in demand, Line-II was commissioned in 1990 with a capacity of 2700 TPD. Line-III was commissioned in 1995 with a capacity of 3500 TPD.
- Subsequently all three lines were upgraded for increasing its capacity to Unit-1 - 3150 TPD, Unit-II - 4150 TPD and Unit-III – 5200 TPD. Has a housing colony and school (CBSE board) for employees.
- **Gujarat Cement Works** was strategically established 2 km from the southern coastline of Gujarat.
- The unit has self reliant on power and water, has state-of-the-art facilities like captive power plant, jetty facility, desalination and RO plant.
- The installed clinker production capacity of GCW in 1995 was 4.2 MTPA, with the two kilns of 6,500 TPD each. GCW reached the milestone of 5.20 MTPA clinker in year 2009, after series of up gradations carried out in stages. Kiln-I was commissioned in March 1996 and kiln-II in April 1997.
- Its thermal power plant capacity is 92 MW. Has a housing colony and school (CBSE board) for employees.
- **Rawan Cement Works** situated in Raipur, Chhattisgarh is an integrated plant with capacity of 5.17 MTPA (15,500 TPD). Established in March 1995, it went through three capacity expansions. In 1995, Rawan Cement Works had expansion of 1 MTPA, in 1996 of 2.4 MTPA and a major expansion of 3.3 MTPA in 2013.

- Other milestones in Rawan Cement Works was the commissioning of ILC tower in 2008, commissioning of CPP in 2010 and Premium Cement (PSC) launched in 2012, with high one-day strength. Has a housing colony and school (CBSE board) for employees
- **Maihar Cement Works** is a modern cement plant with high level of automation, computer aided data acquisition, and sophisticated control system, which ensures quality at every stage of production.
- The unit is strategically located at Sarlanagar at a distance of about 8 Kms from the town of Maihar on Maihar-Dhanwahi Road in Satna District of Madhya Pradesh. The unit has a clinker production capacity of 3.0 MTPA, cement production capacity of 5.0 MTPA, and manufactures OPC 43, OPC 53, & PPC grade of cement.
- The unit is equipped with latest technology and equipment suppliers like M/s Loesche, M/s Pfizer, and Thermax. Has a housing colony and school (CBSE board) for employees..

