



BUSINESS

CEMENT

LOCATION

Rajasthan, AP, MP

POSITION NAME

DEPARTMENT HEAD

MINES OPERATIONS

EDUCATION

BE - Mining, Certified 1st Class Mining Manager by DGMS

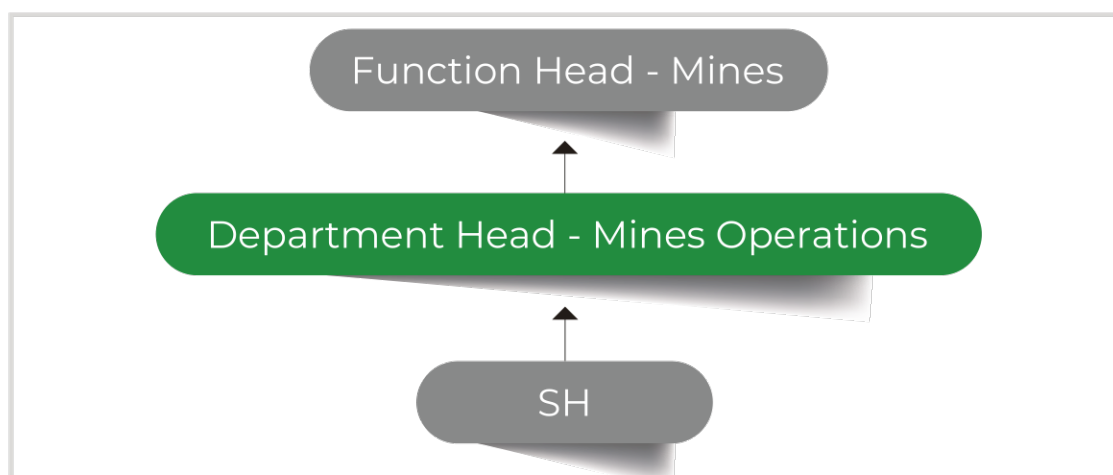
KEY RESPONSIBILITIES

- Production at Budgeted Cost
- Mine Development
- Quality & Planning
- Statutory Compliance
- Safety Excellence
- System Implementation
- People Management & Development

ADDITIONAL REQUIREMENTS

- 10 - 12 years of experience.

REPORTING STRUCTURE



UNIT LOCATION BRIEF

- **Pali Cement Works** is an integrated plant with production capacity of 3.3 MTPA (10000 TPD Kiln) with cement mill capacity of 1.9 MTPA, commissioned in Dec 2022.
- It Plant is fully automated, centrally controlled, one of the most energy efficient and eco-friendly with latest technology supplied by world renowned cement technology supplier, M/s KHD Humboldt, IKN, Pfeifer & Takraf.
- It manufactures clinker and cement – OPC-43, OPC-53 and PPC grades. Highly sophisticated technological features have been incorporated in the plant. This plant does not have a housing colony or school within the plant.
- **Andhra Pradesh Cement Works** was a subsidiary of Grasim Industries Limited acquired by Aditya Birla Group from L&T Group in 2004.
- It is located on the picturesque hilly area near Tadipatri, on the border line between Anantapur and Kurnool Districts in Rayalseema. The installed capacity of 2 MTPA commissioned in 1998, enhanced to 2.7 MTPA over a period of six years through several improvements and modifications.
- The plant went through further expansion in 2008 by putting up a second Line with another 3.4 MTPA. Currently, the total cement production capacity of APCW, along with the associated Units, is 11 MTPA.
- Has a housing colony and school (CBSE board) for employees.
- **Maihar Cement Works** is a modern cement plant with high level of automation, computer aided data acquisition, and sophisticated control system, which ensures quality at every stage of production.
- The unit is strategically located at Sarlanagar at a distance of about 8 Kms from the town of Maihar on Maihar-Dhanwahi Road in Satna District of Madhya Pradesh.
- The unit has a clinker production capacity of 3.0 MTPA, cement production capacity of 5.0 MTPA, and manufactures OPC 43, OPC 53, & PPC grade of cement. The unit is equipped with latest technology and equipment suppliers like M/s Loesche, M/s Pfizer, and Thermax.
- Has a housing colony and school (CBSE board) for employees.